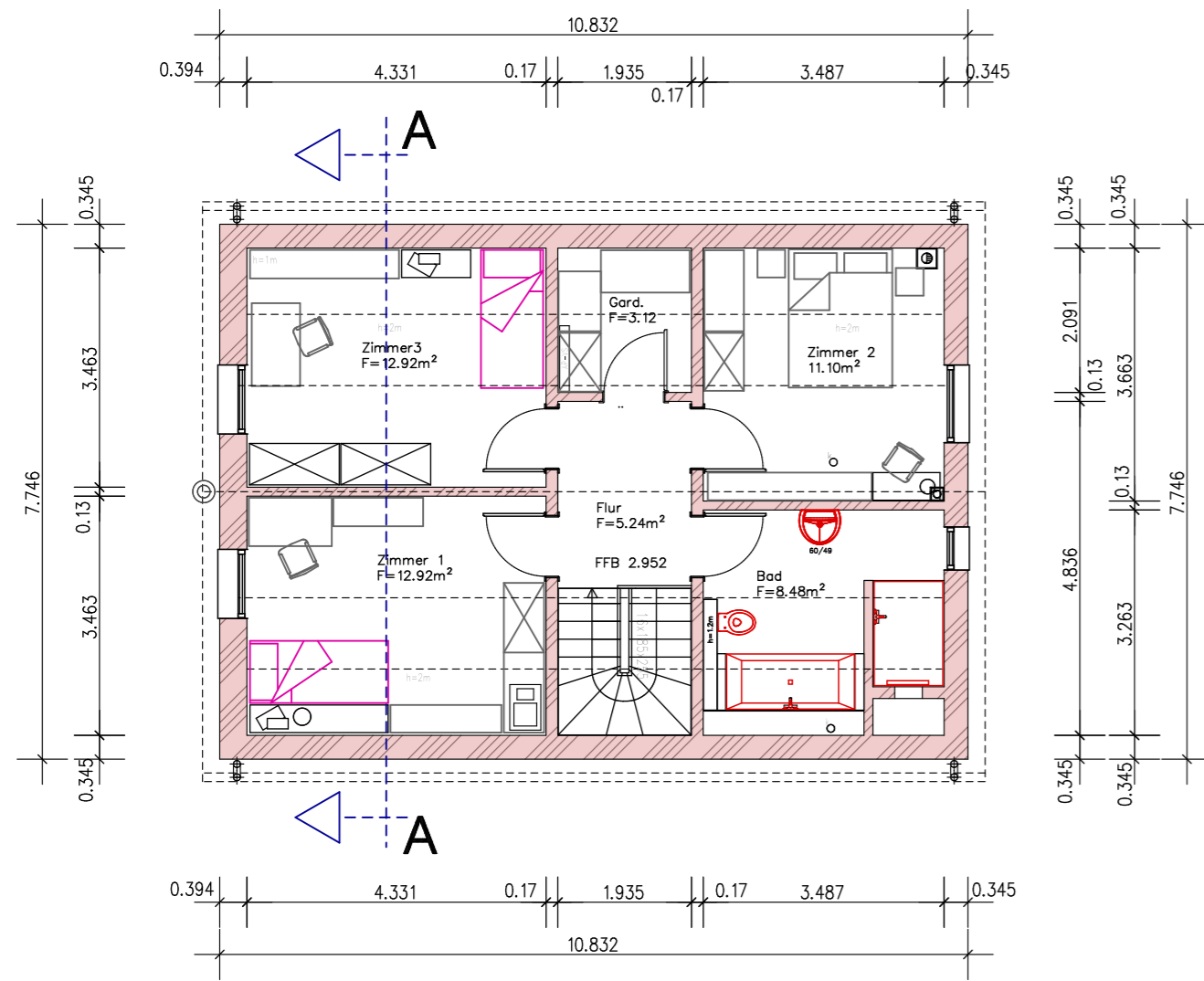
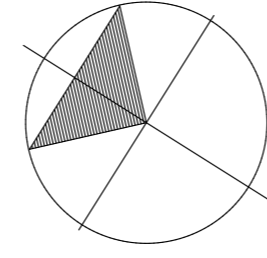


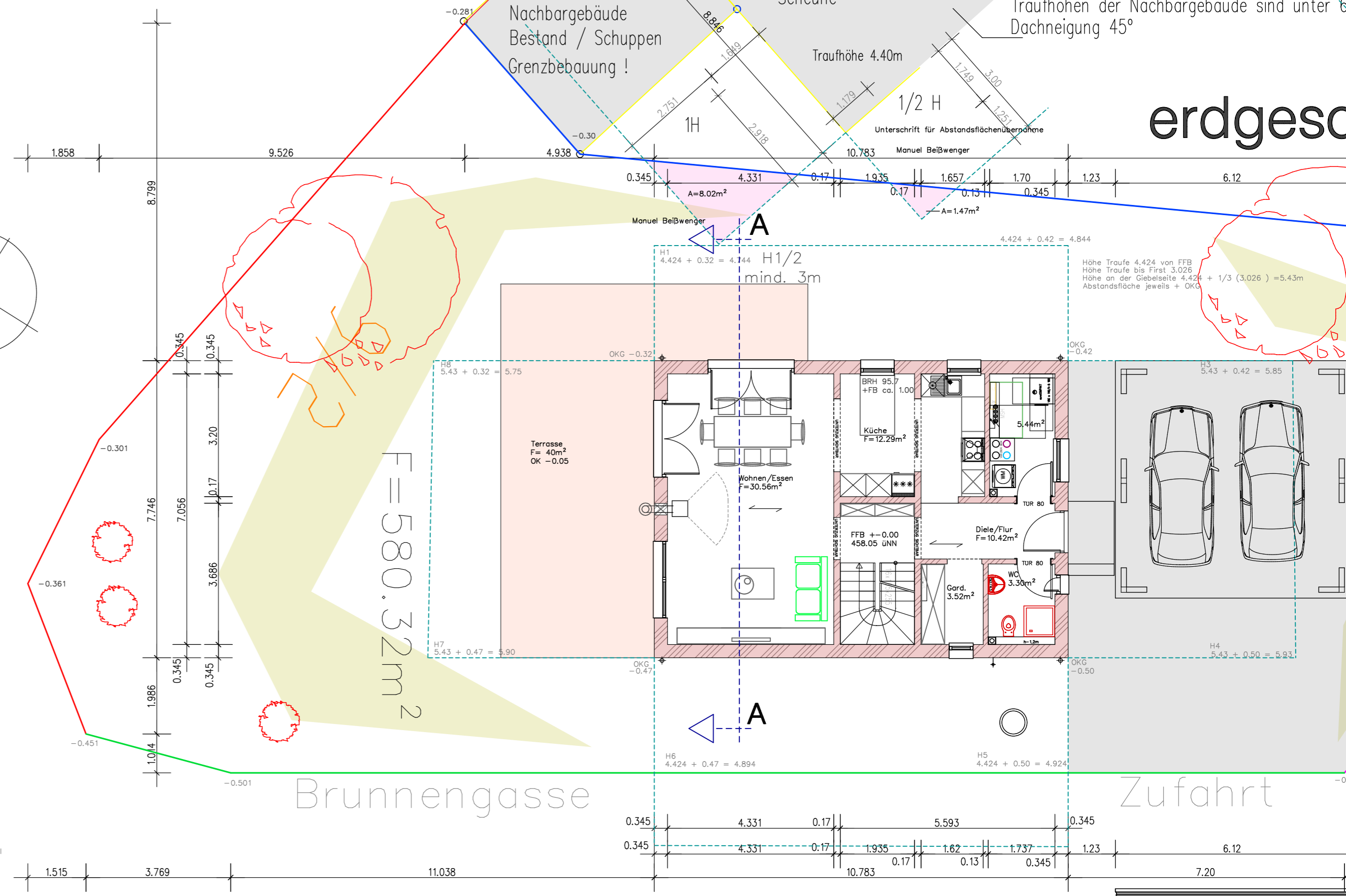
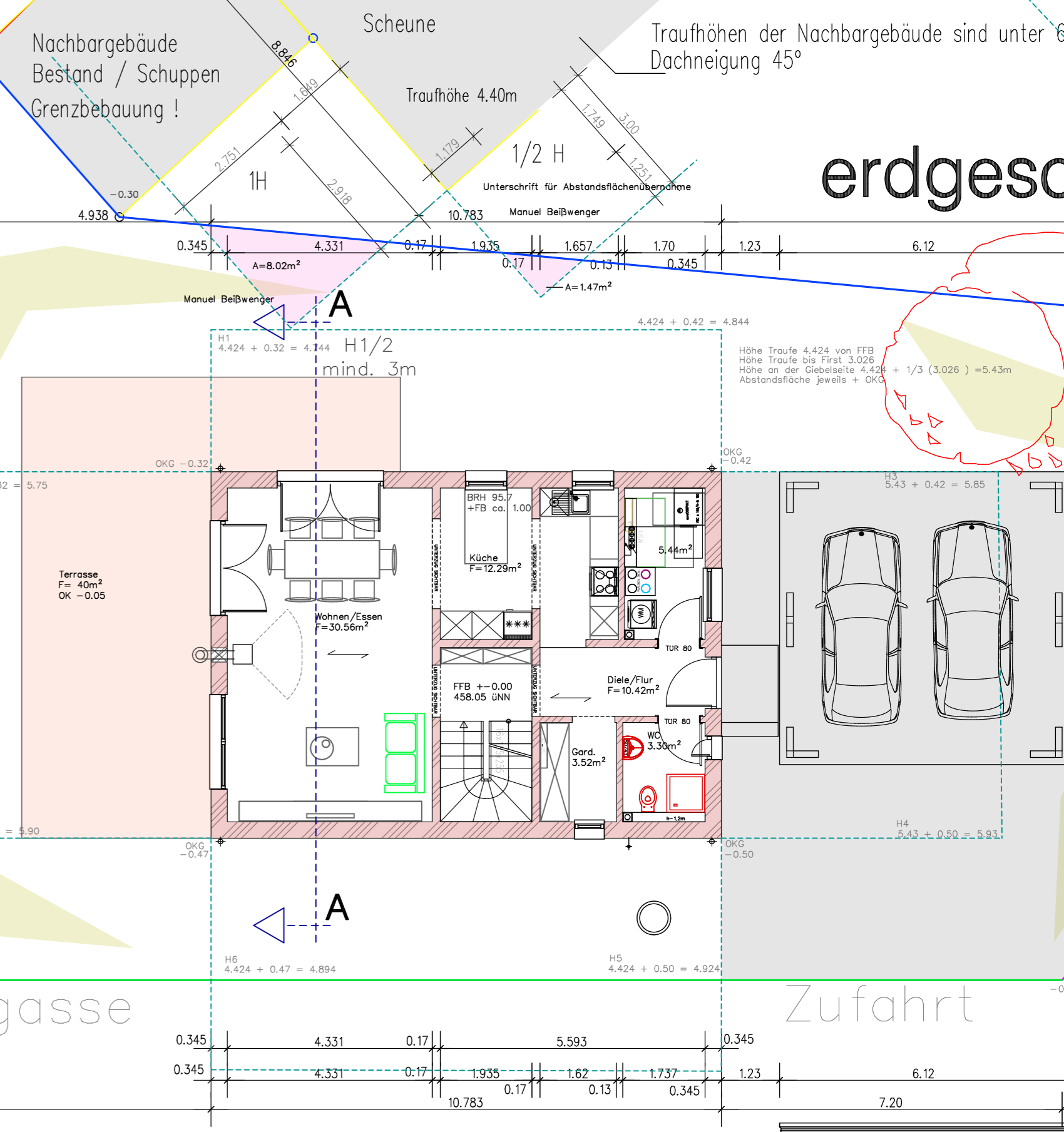
dachgeschoss



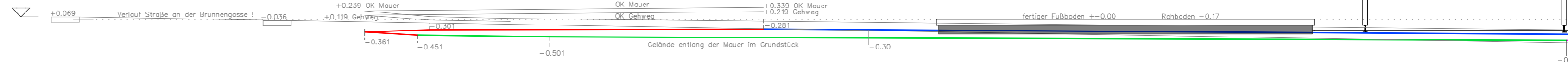
- Bezugslinie höchster Punkt
- östliche Grenze
- südliche Grenze
- westliche Grenze
- nördliche Grenze
- Baugrenze
- linie +0.00
- neues Gelände
- Abstandsflächen



Wandnische ?

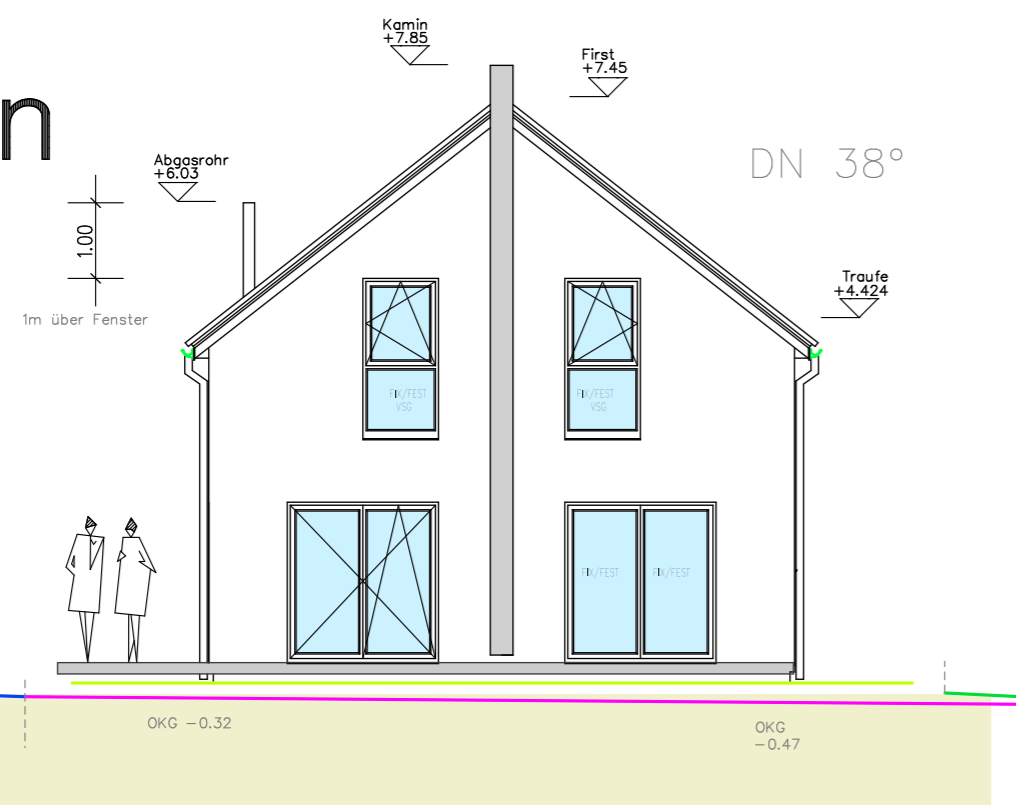


für die Einmessung können nur die Kanaldeckel auf der Straße verwendet werden !

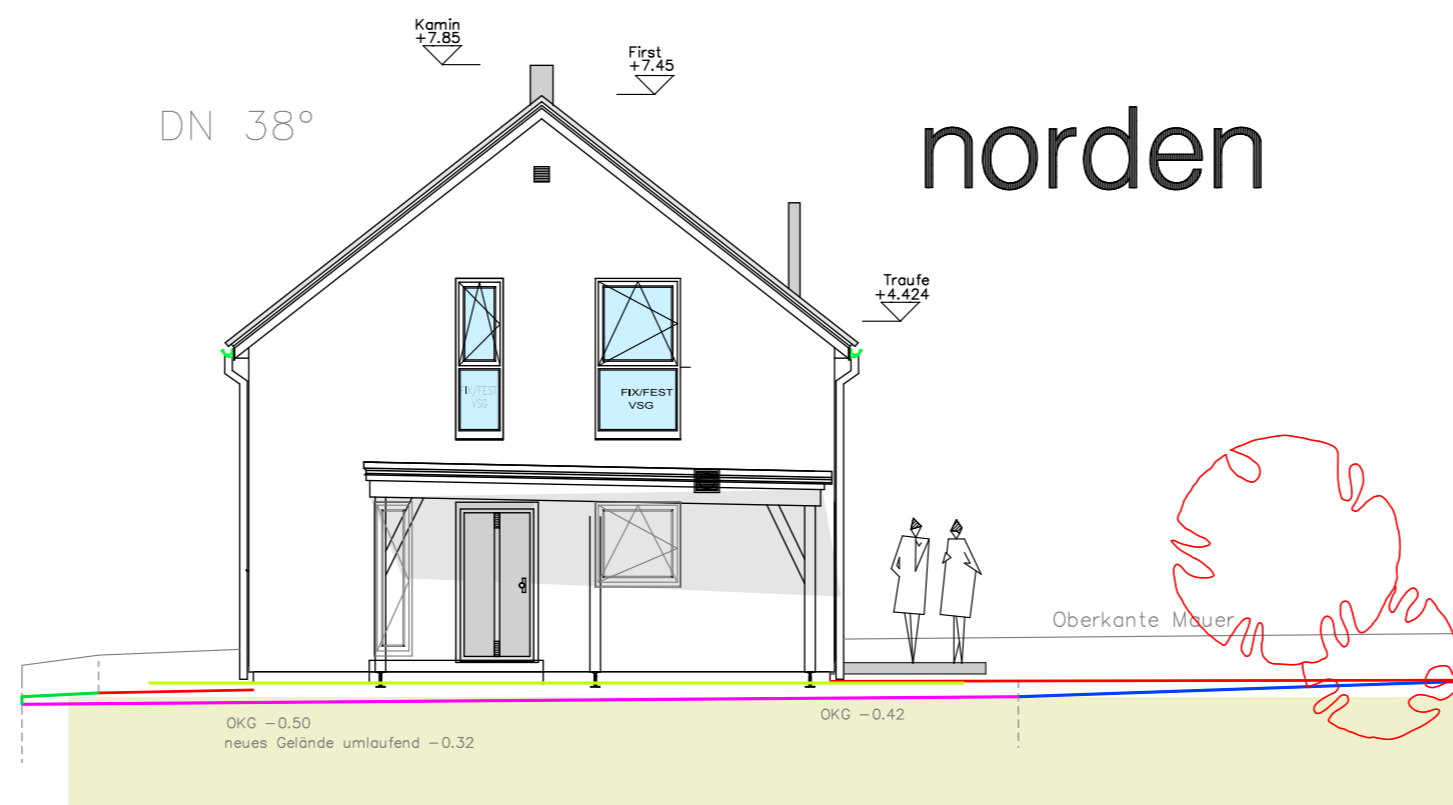


Höhenschema

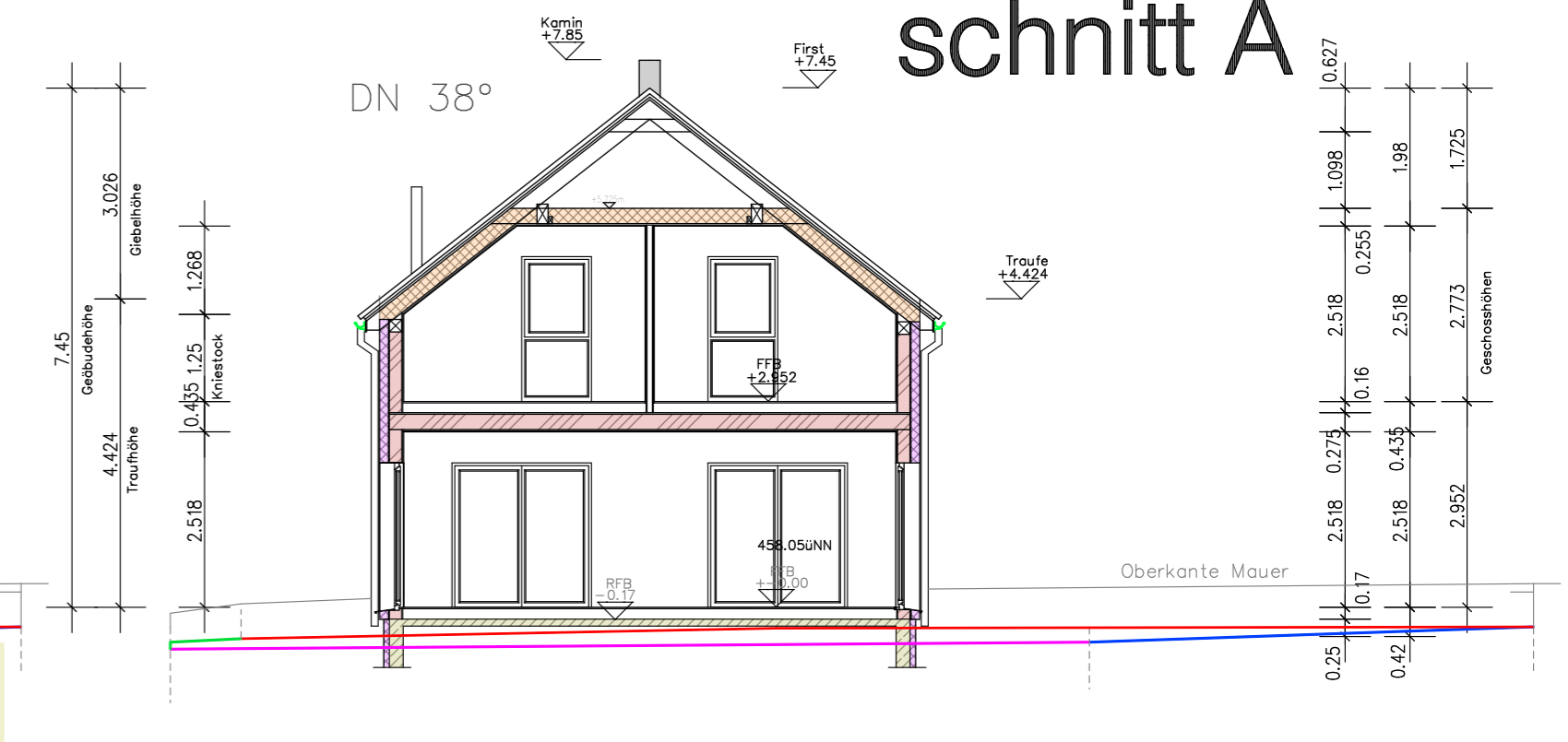
süden



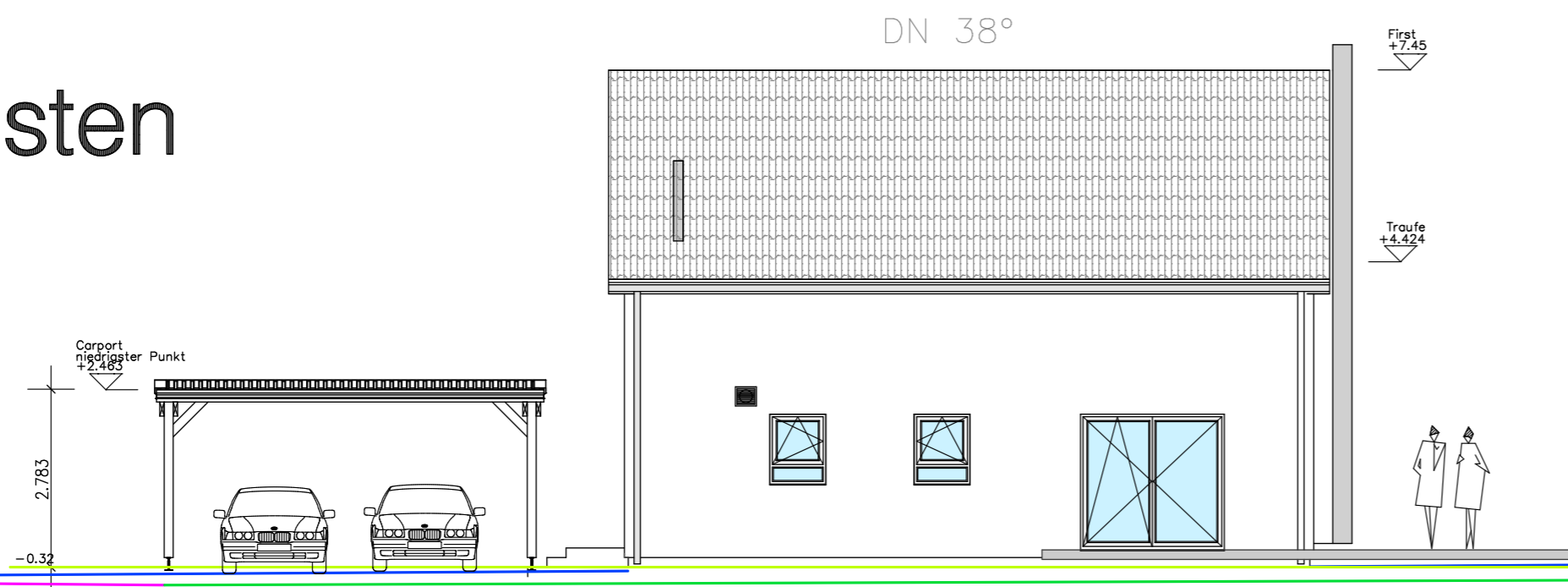
norden



schnitt A



westen



osten

