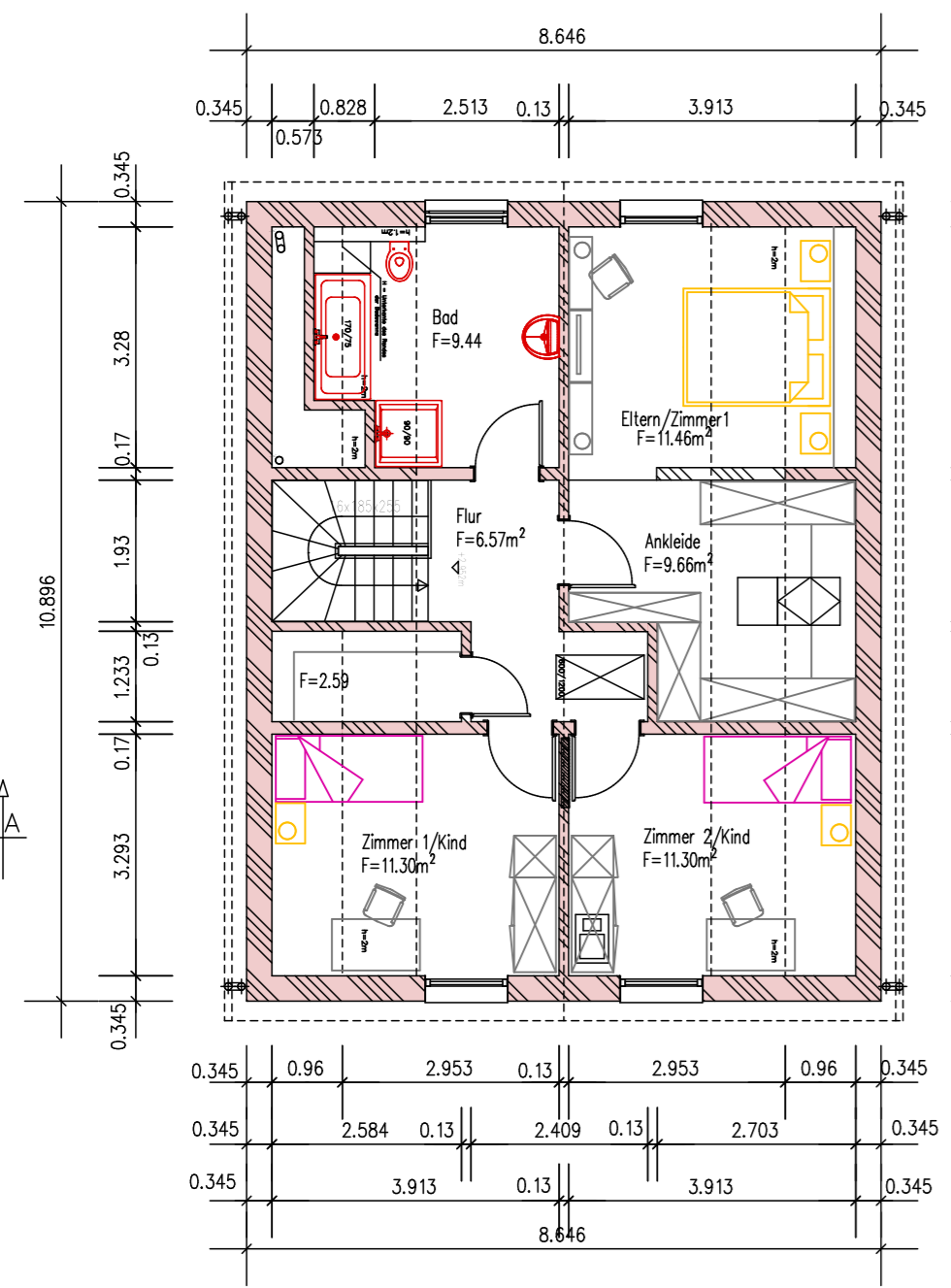
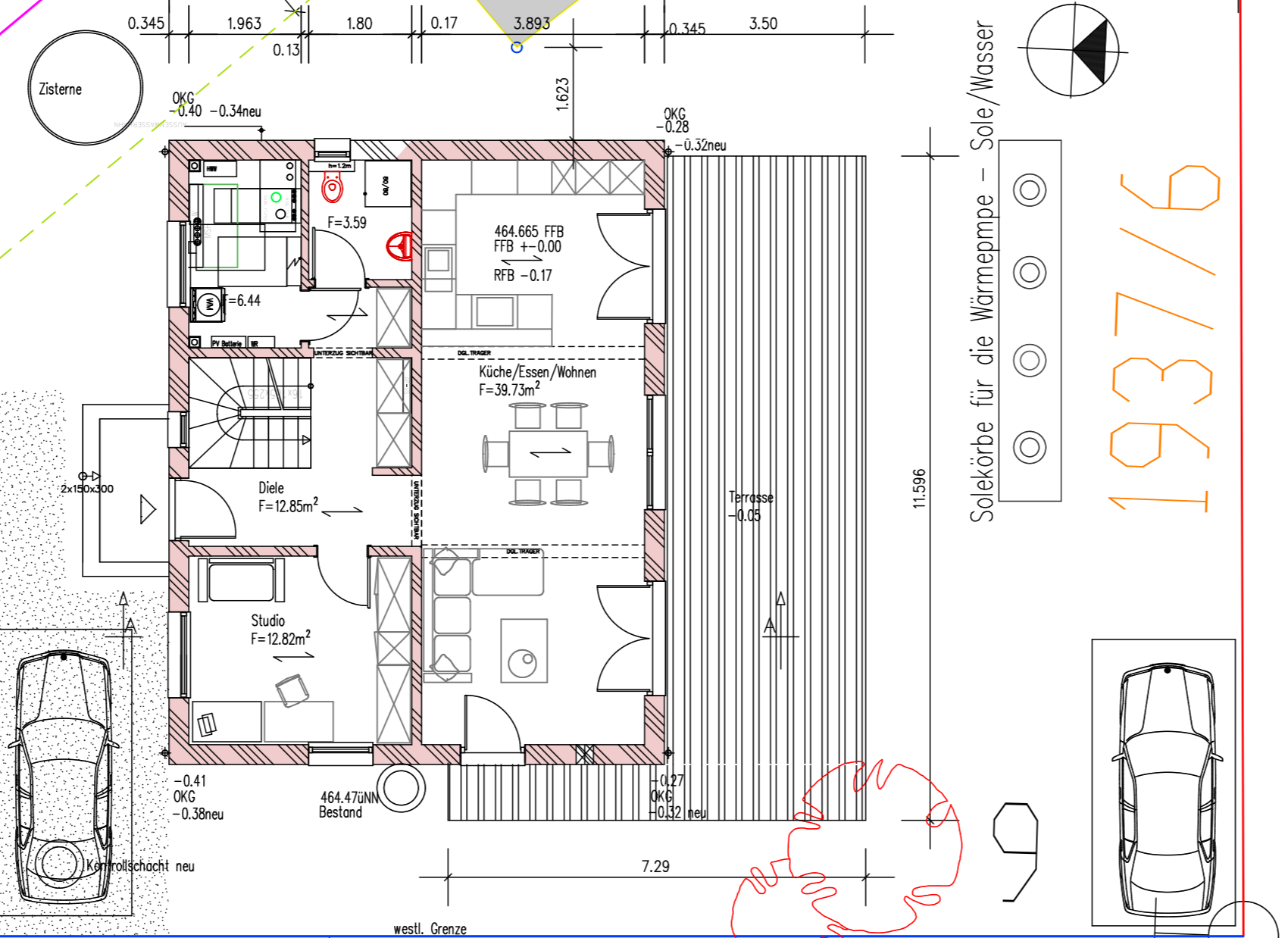


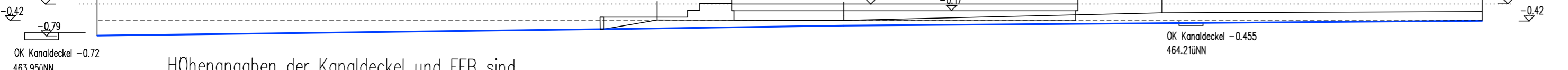
Dachgeschoss



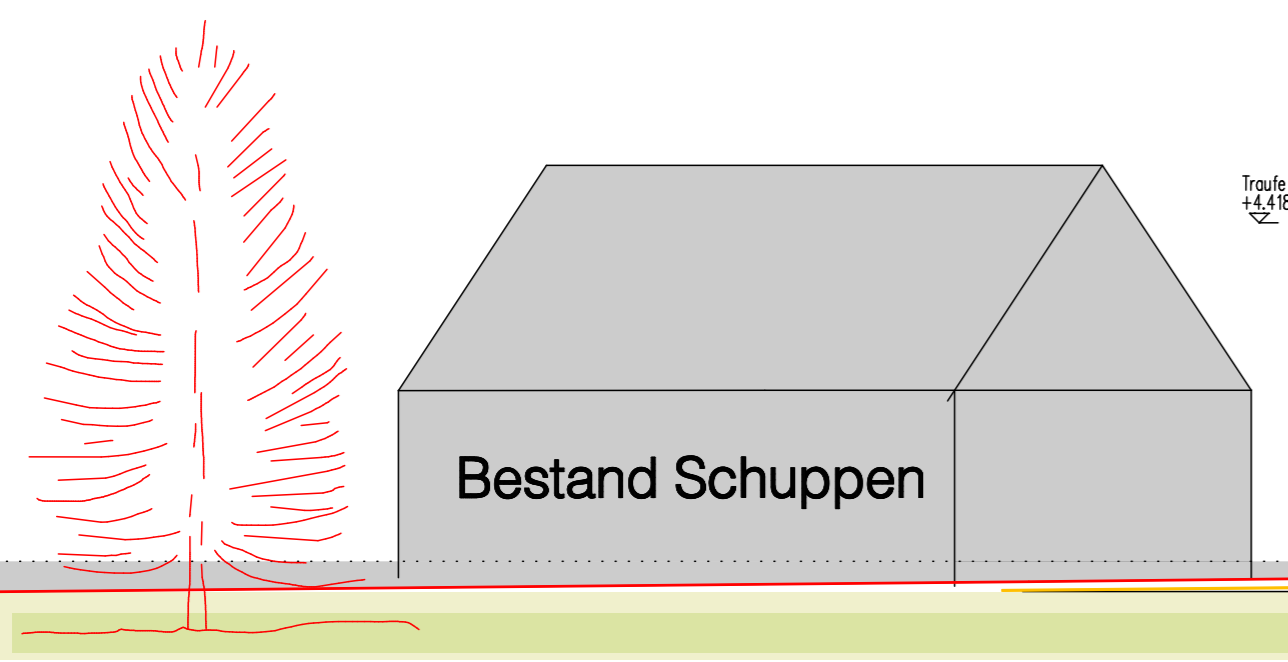
Erdgeschoss



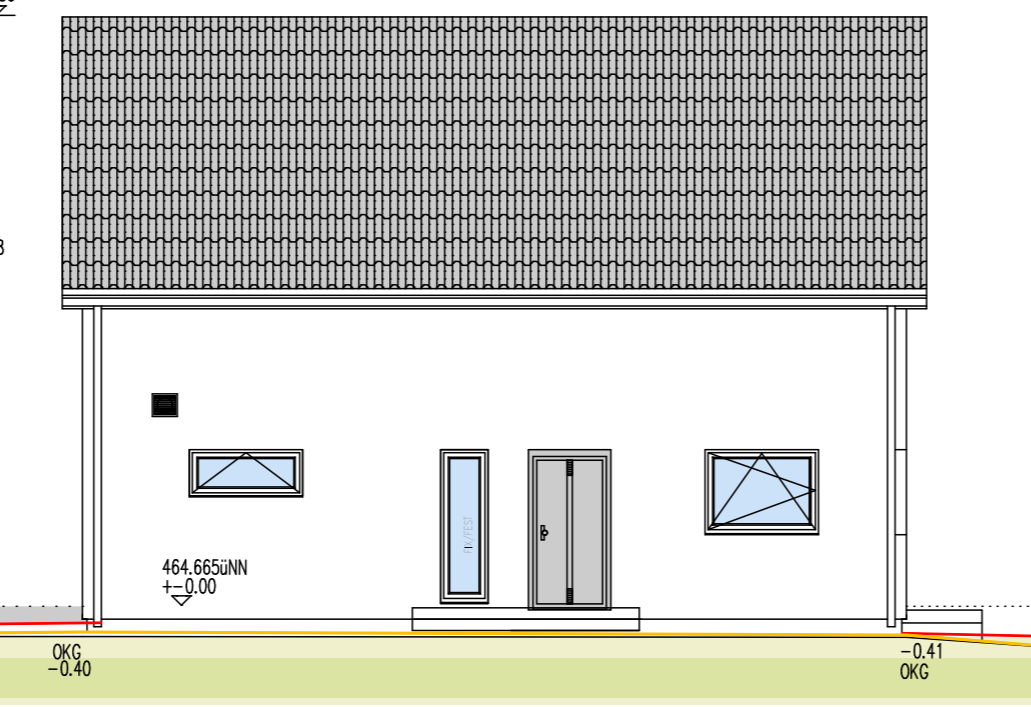
Höhenschema



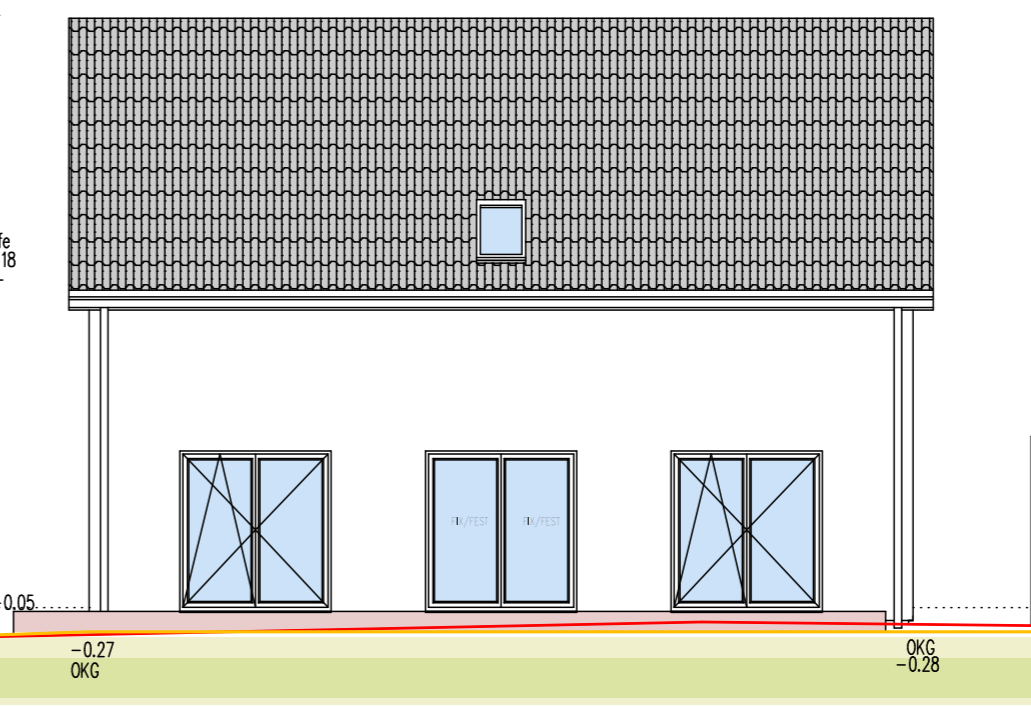
Norden



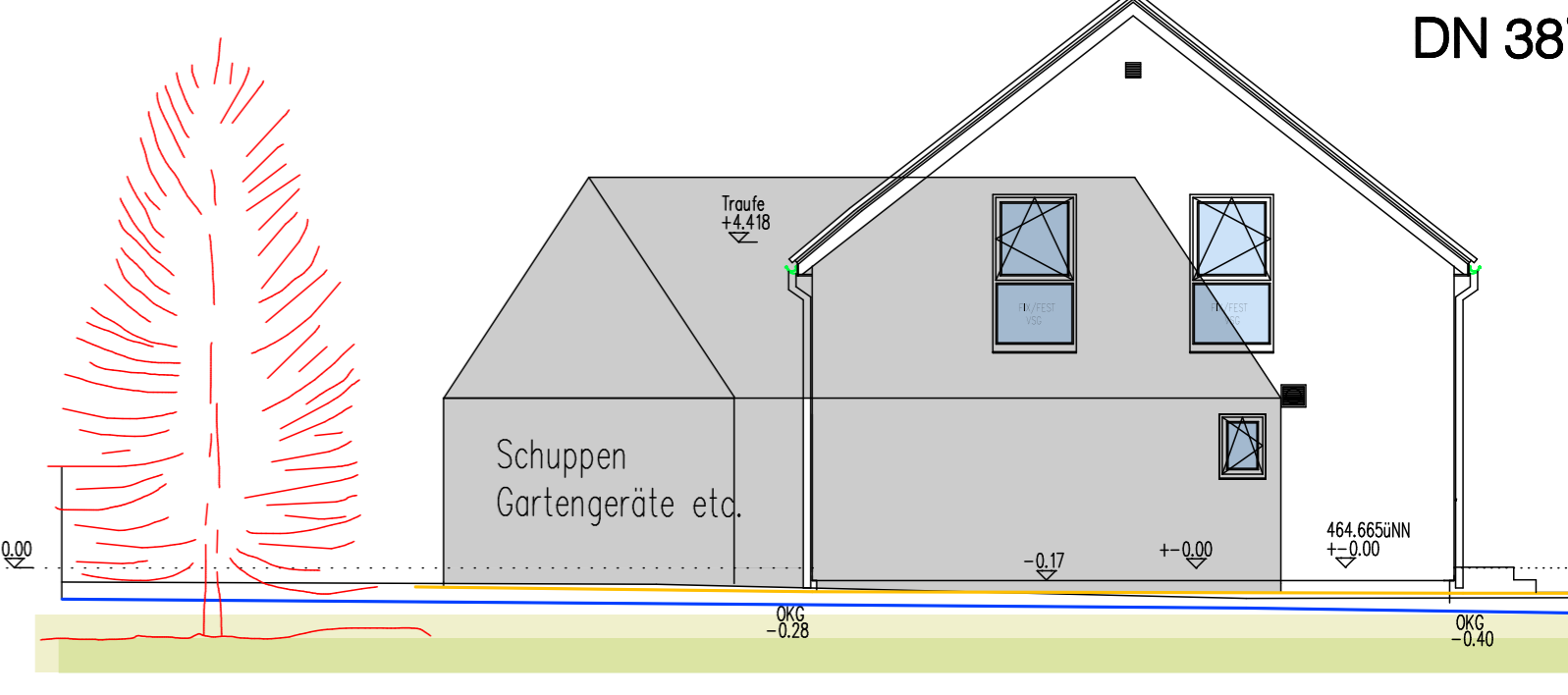
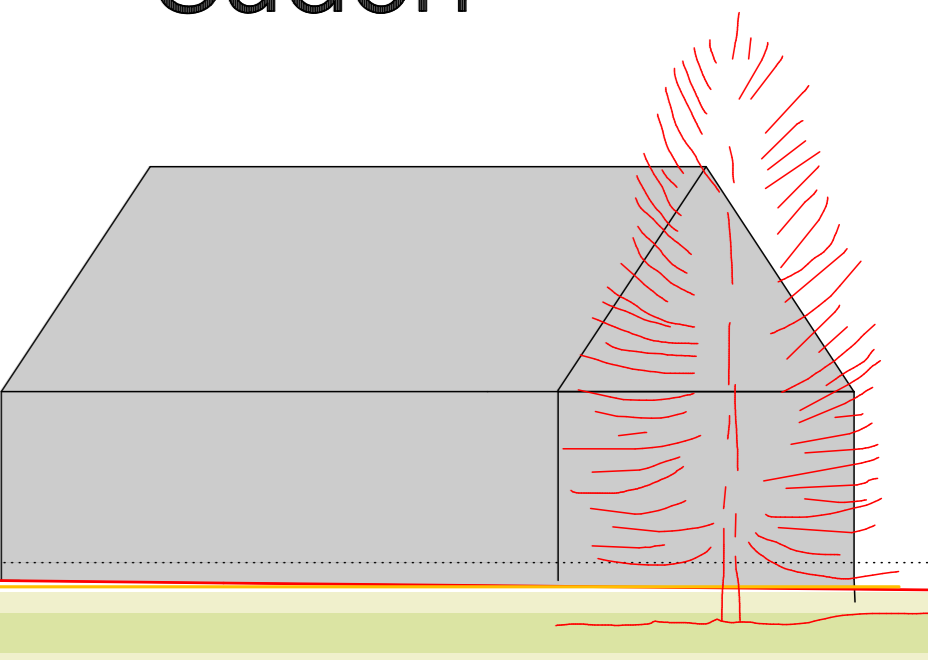
DN 38°



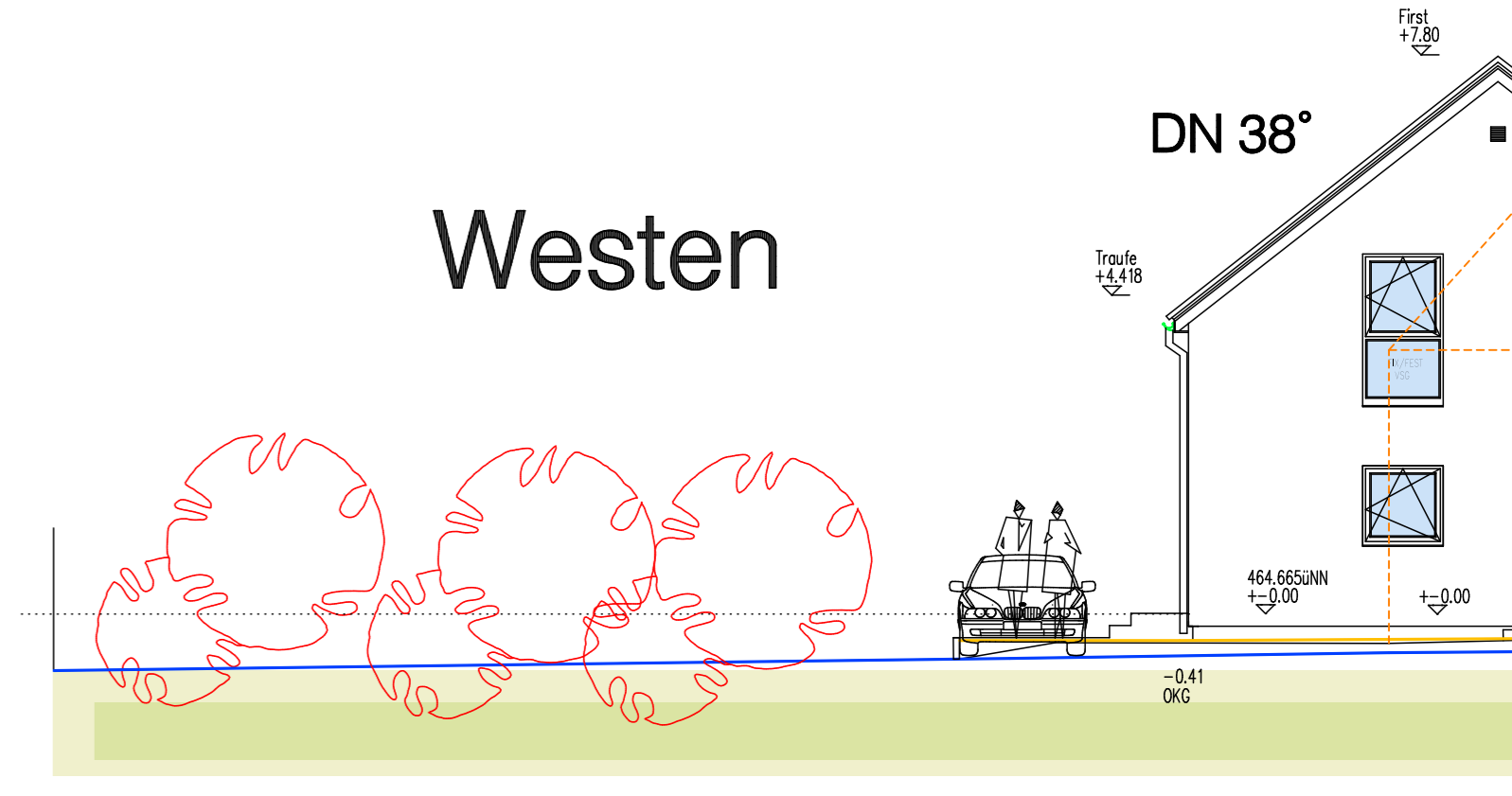
DN 38°



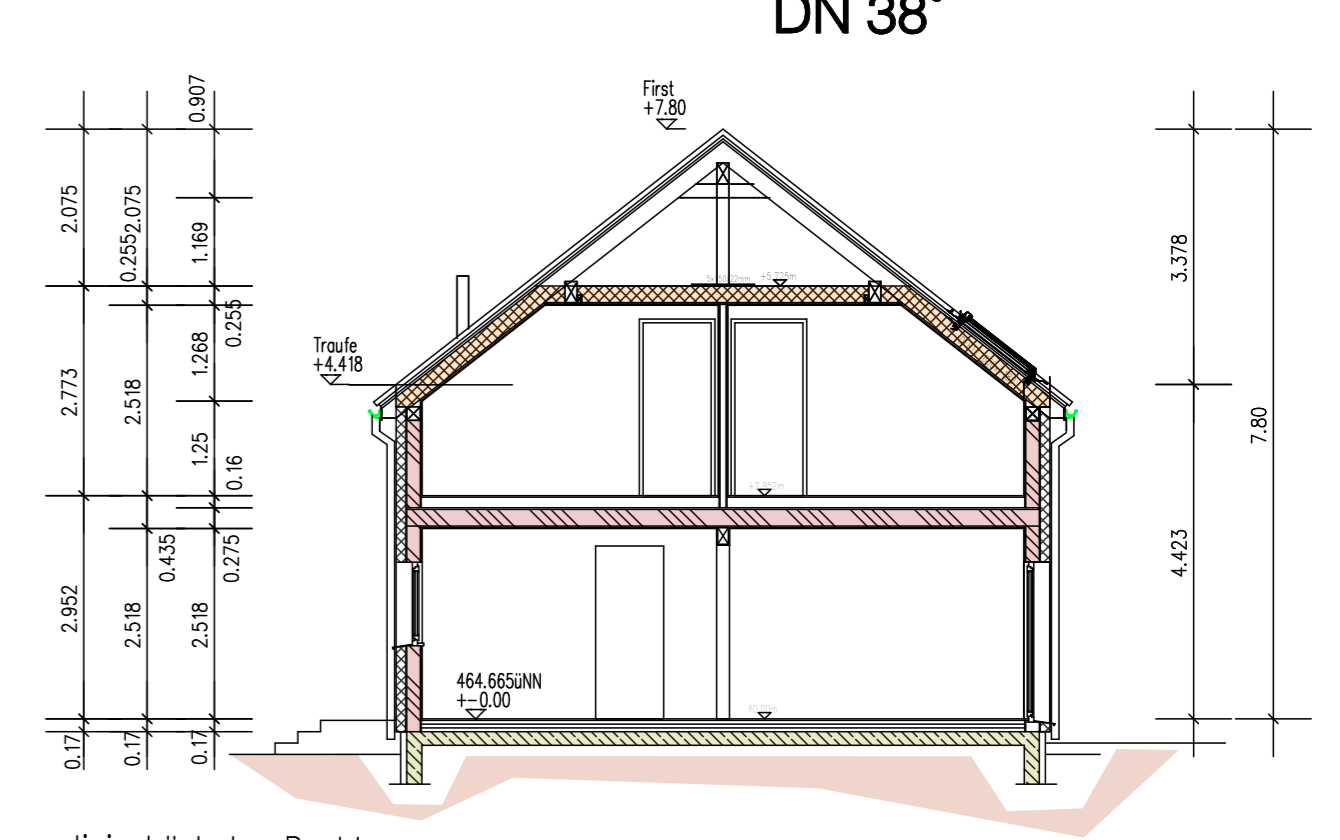
Süden



Westen



Schnitt



- - - - - Bezugslinie höchster Punkt
- östliche Grenze
- südliche Grenze
- westliche Grenze / Höhe Gehweg
- nördliche Grenze
- - - - - Baugrenze
- linie +0.00
- neues Gelände
- bestehendes Gelände
- Abstandsfläche

1937/6

Solekörbe für die Wärmepumpe - Sole/Wasser

Gemüsegarten

Bestand / Schuppen

F=57.95m²

Abstandsfläche

1/2 H

-0.27

OKG -0.40 -0.34neu

464.665 FFB +0.00

RFB -0.17

F=6.44

Küche/Essen/Wohnen

F=39.73m²

Dielen

F=12.85m²

Studio

F=12.82m²

464.472üNN Bestand

OKG -0.41 -0.38neu

OKG -0.42

OKG -0.28

OKG -0.32neu

OKG -0.32neu

OKG -0.32neu

OKG -0.32neu

OKG -0.32neu

OKG -0.32neu

OKG -0.32neu

OKG -0.32neu

OKG -0.32neu

OKG -0.32neu

OKG -0.32neu

OKG -0.32neu

OKG -0.32neu

OKG -0.32neu

OKG -0.32neu

OKG -0.32neu

OKG -0.32neu

OKG -0.32neu

OKG -0.32neu