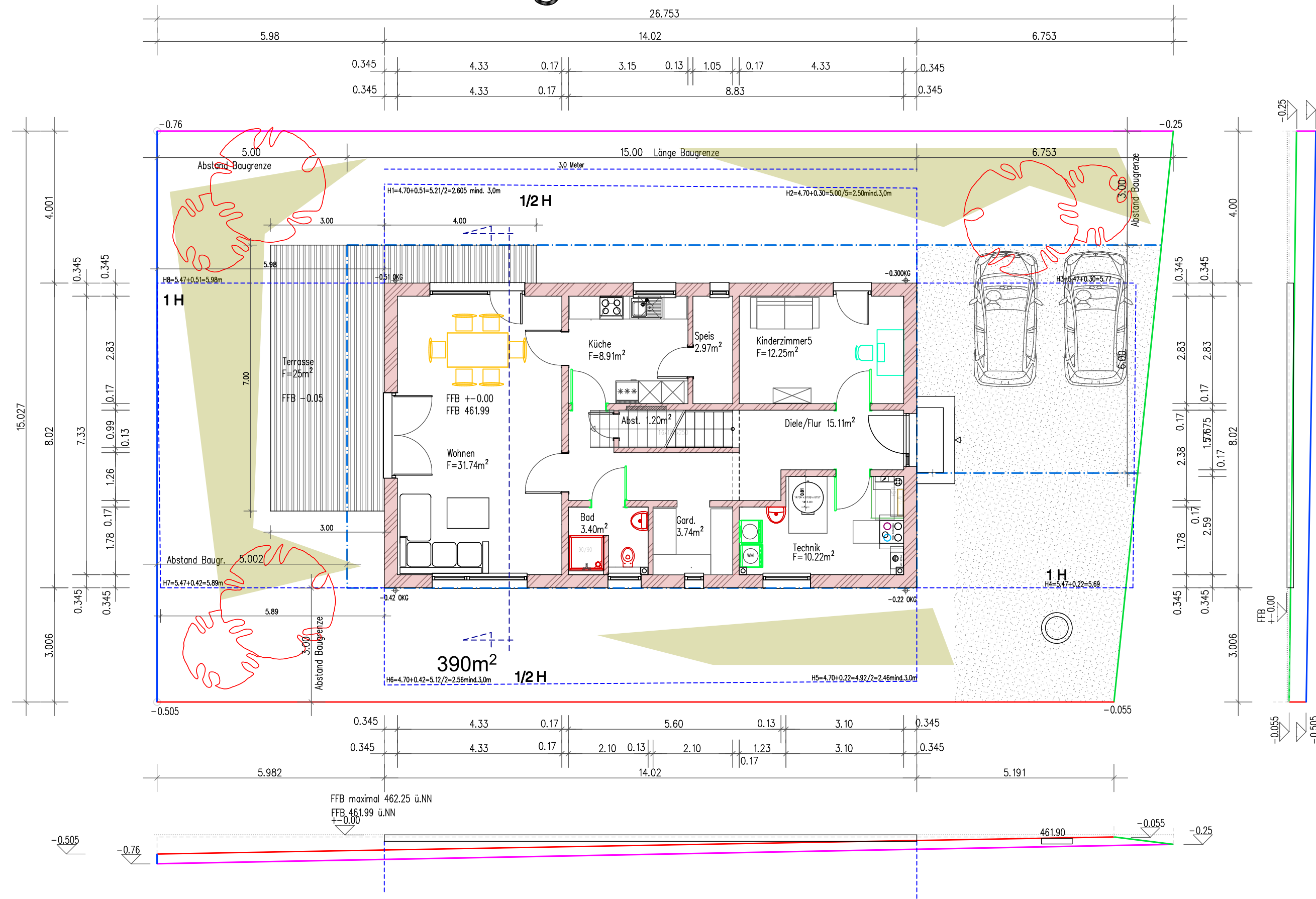
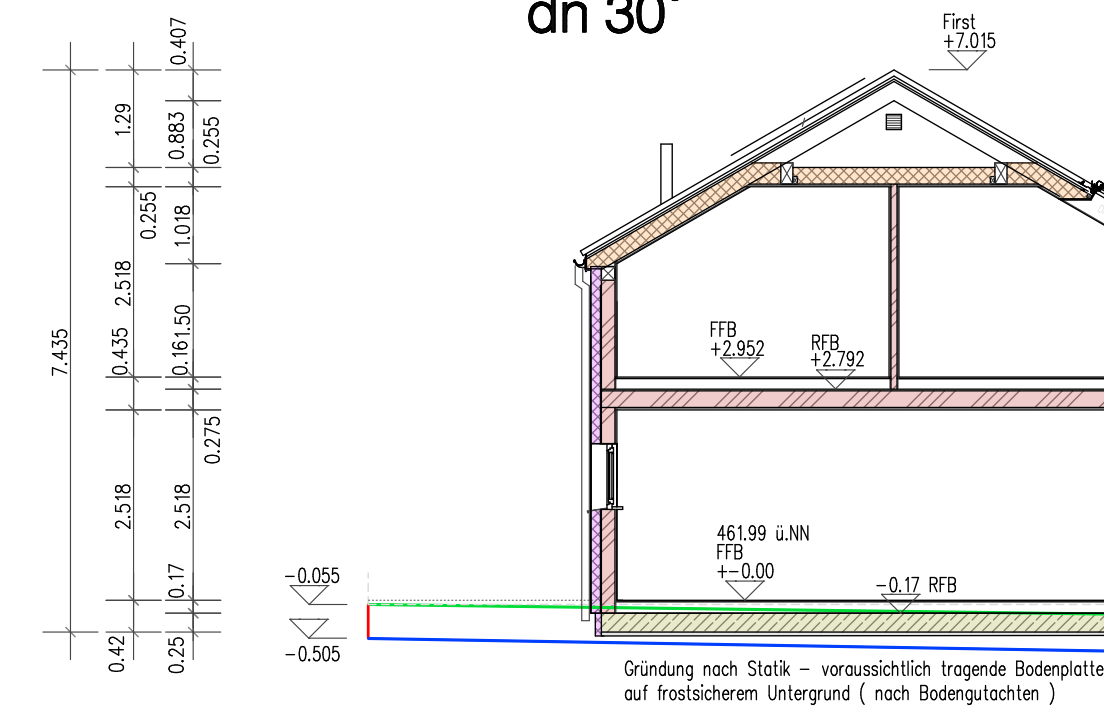


# erdgeschoss

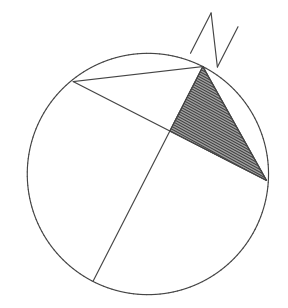
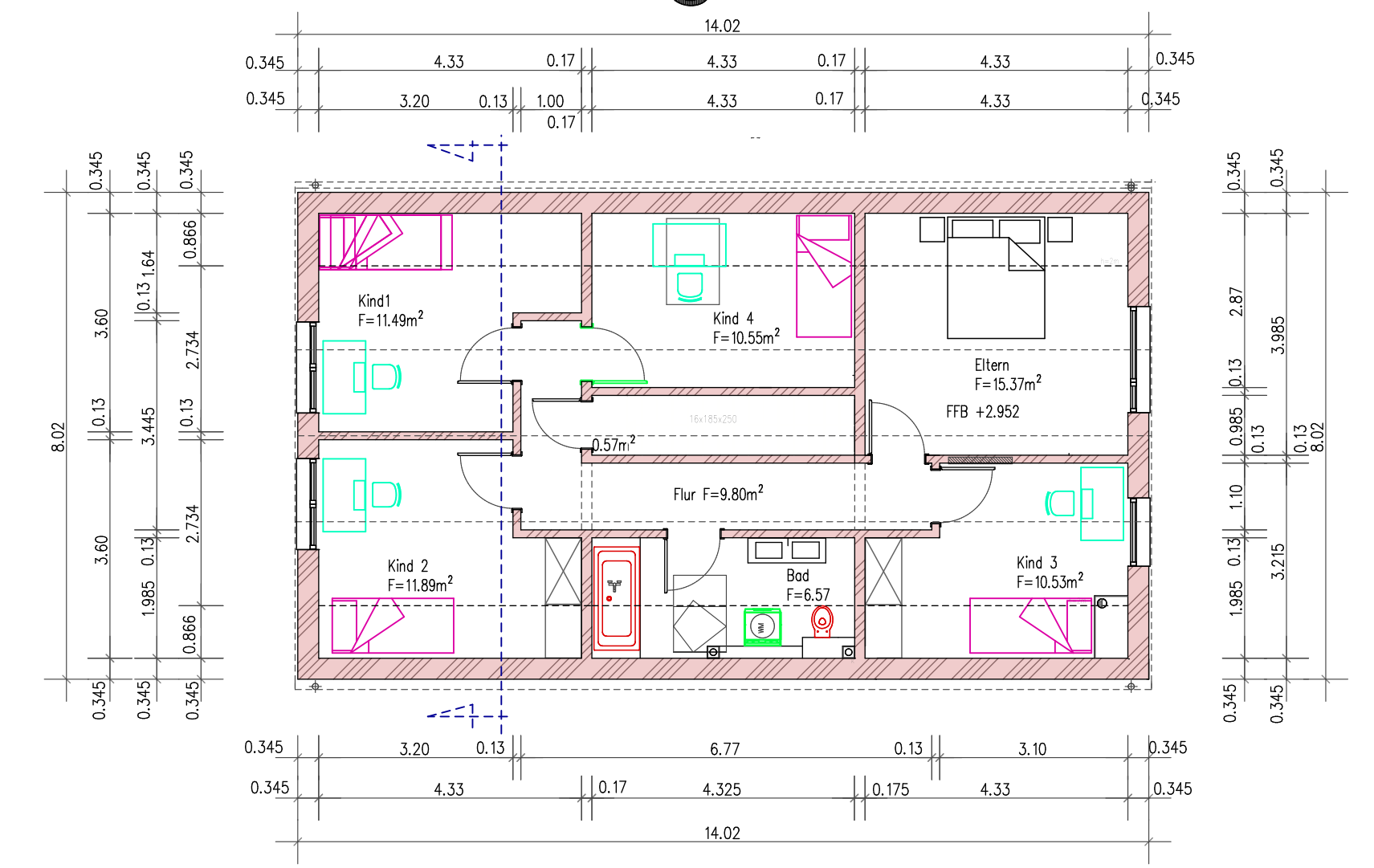


Abstandsflächenberechnung:  
 Giebelseite:  $\frac{1}{3}$  Giebelhöhe = 0.77  
 + Traufhöhe 4.70 = 5.47m  
 Traufseite: Traufhöhe = 4.70m  
 jeweils + Höhe OKG = Abstandsfläche

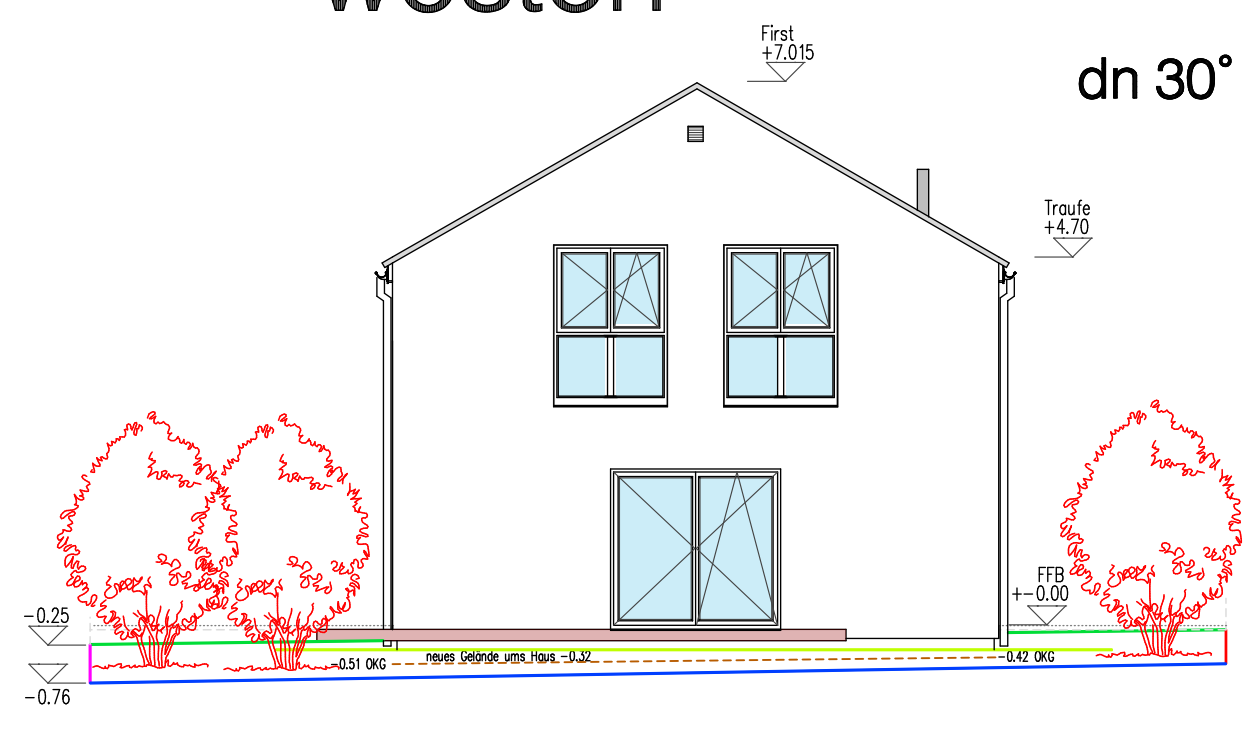
- Bordstein
- Bezugslinie höchster Punkt
- östliche Grenze
- südliche Grenze
- westliche Grenze
- nördliche Grenze
- - - Baugrenze
- linie ±0.00
- neues Gelände
- - - bestehendes Gelände
- - - Abstandsflächen



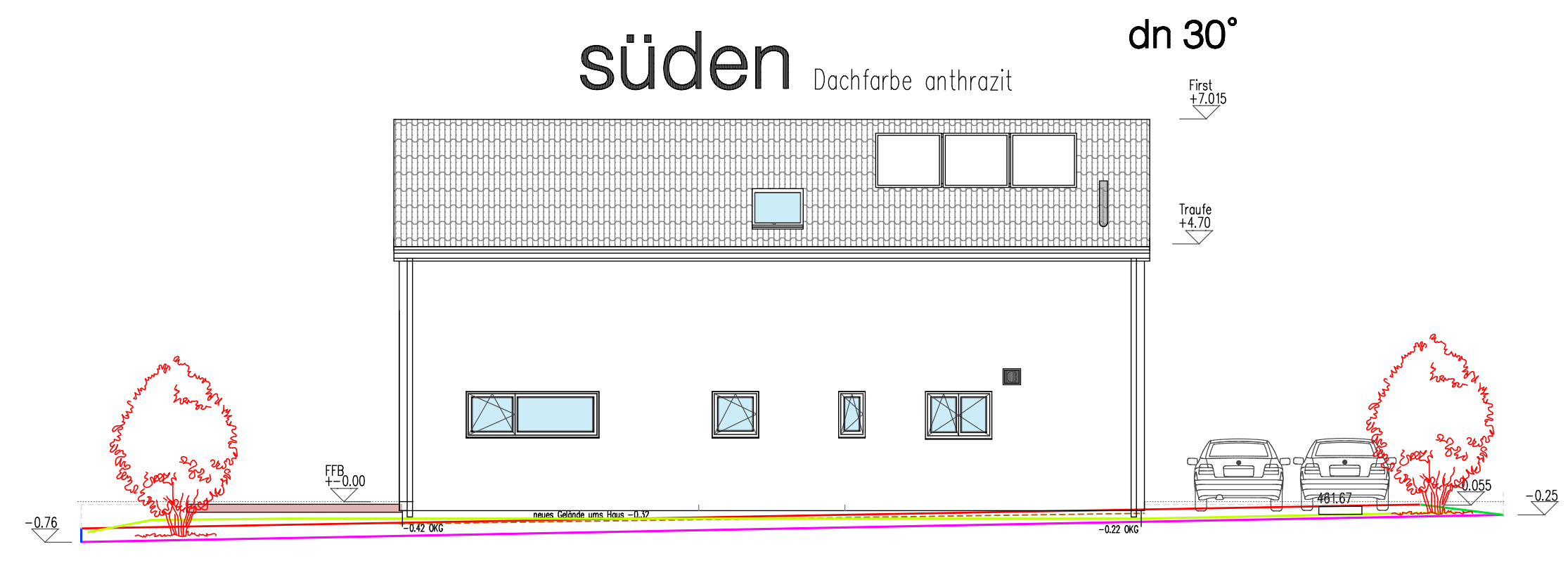
# obergeschoss



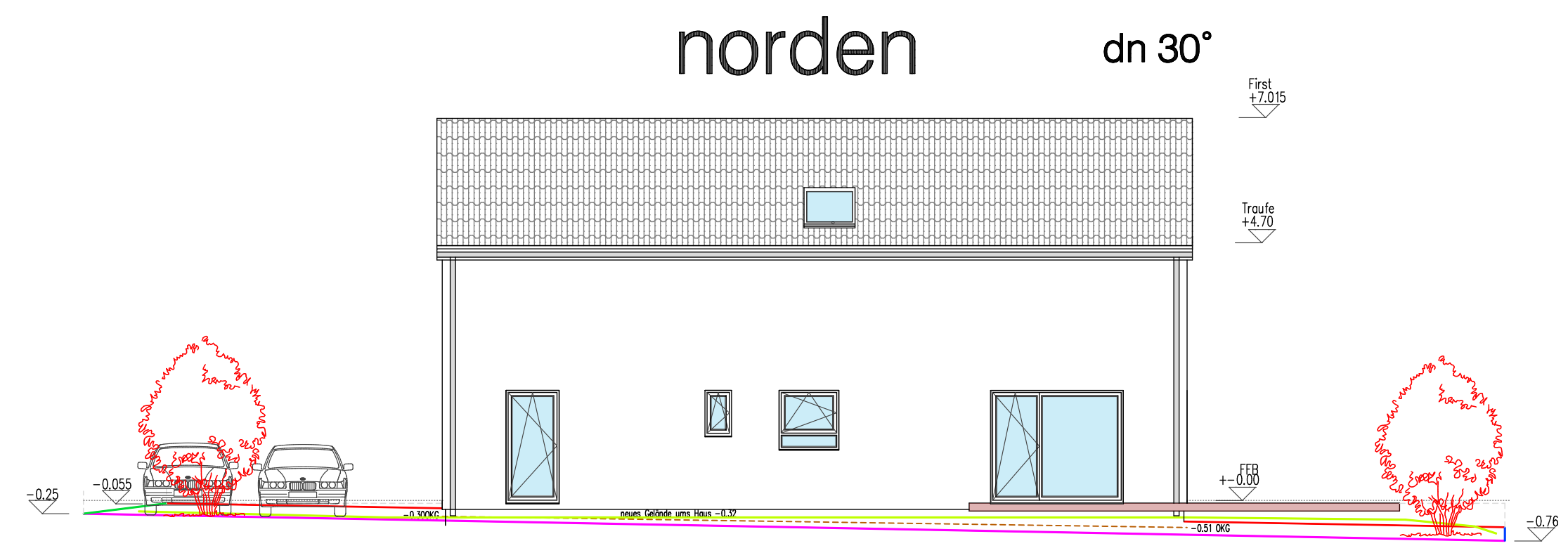
## westen



## süden



## norden



## osten

